

GACD Implementation Science e-Hub
ADVANCED PROGRAMME



MODULE 1 | LECTURE 1D

Systems approach to scale up

Anusha Ramani Chander
Monash University – Australia

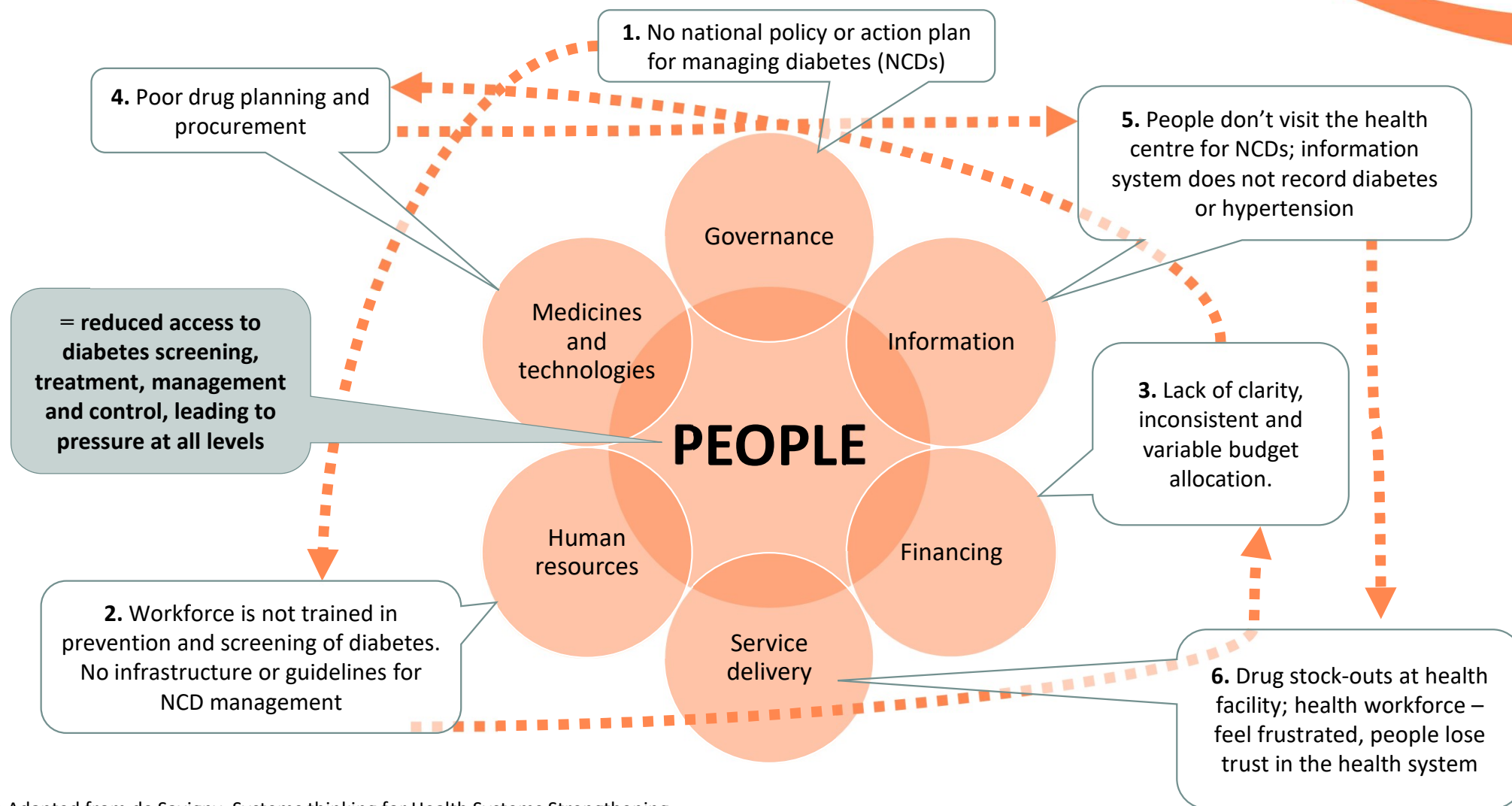
Zinzi Pardoel
University Medical Center Groningen – Netherlands



Lecture overview

- Holistic perspective on health systems
- Understanding scaling up
- Upscaling working group joint study protocol:
Our progress
- Two case studies to show diversity
- Lessons learnt and key messages

Interconnectedness of health systems



Source: Adapted from de Savigny, Systems thinking for Health Systems Strengthening

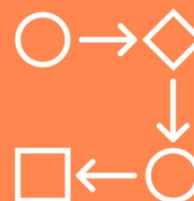
Complexity of health systems



Complex systems with
interactive elements



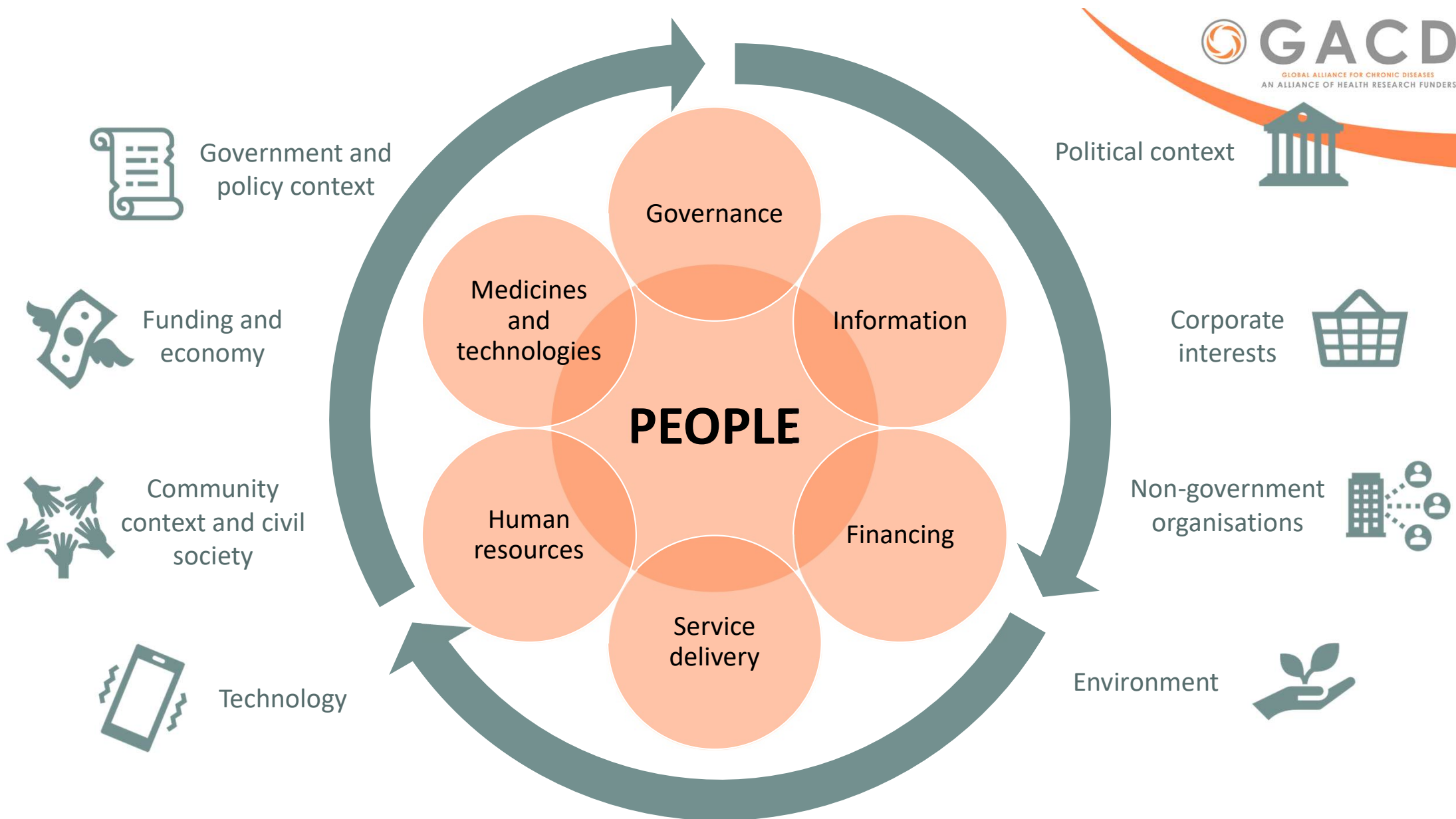
Interactions and
inter-relationships



Unpredictable
and non-linear



Feedback loops and
adaptive mechanisms



Defining scale up

Requires planning

Making it useful

Providing
scientific
evidence

“Deliberate efforts to increase the impact
of successfully tested health innovations
so as to benefit more people and to foster
policy and programme development on a
lasting basis”

Greater
numbers,
more
equitable

Embed
in policy

Sustainable

Summary of scale up

Scale up is more complex than large scale implementation

Increasing coverage and reach of interventions but considering....

Context-specific

Evidence-based planning

Equity: available, accessible, affordable

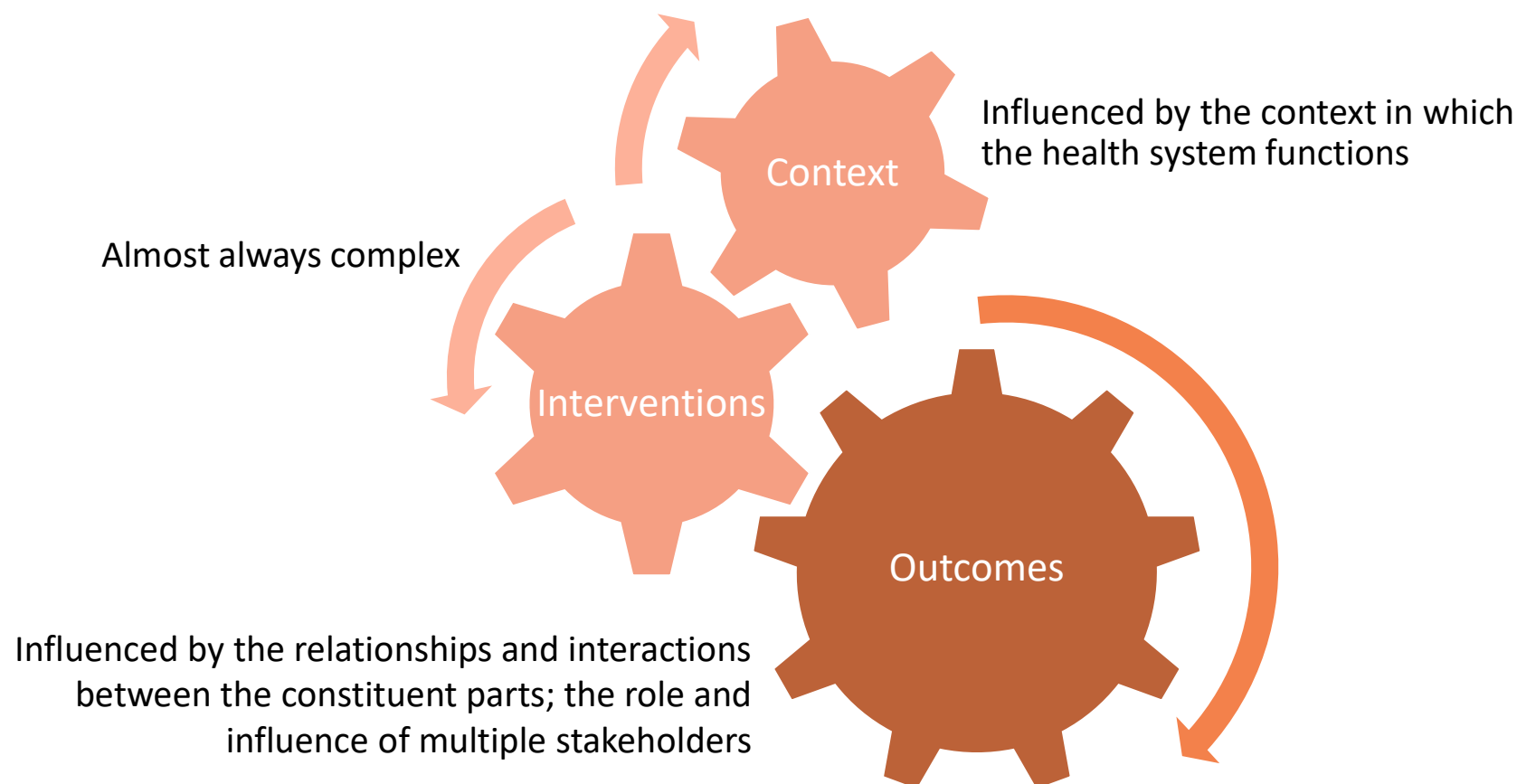
Quality and fidelity standards: while scaling up and over time

Non-discriminatory: geography, gender, religion

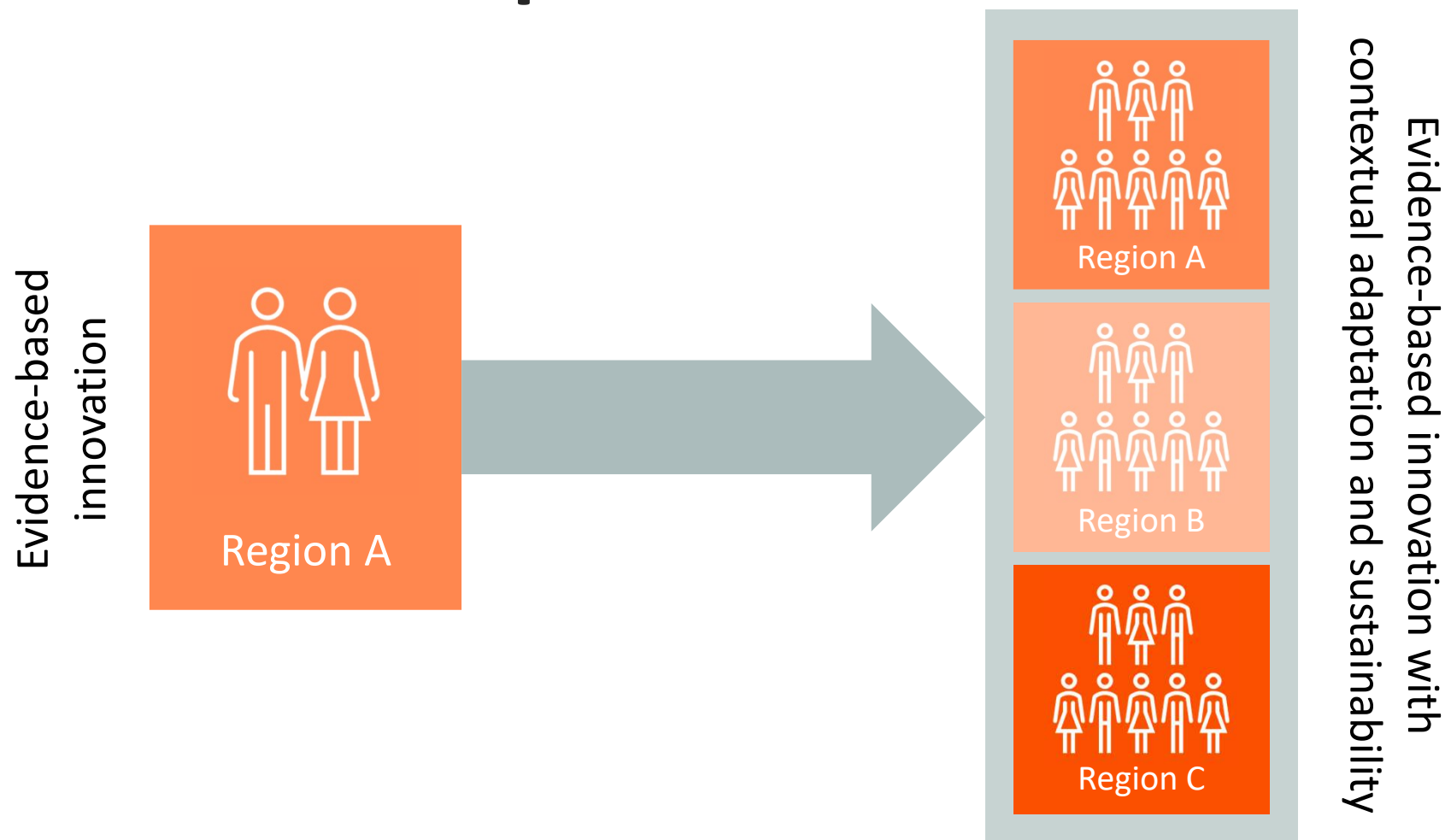
Embedded in policy

Sustainable: ongoing resources

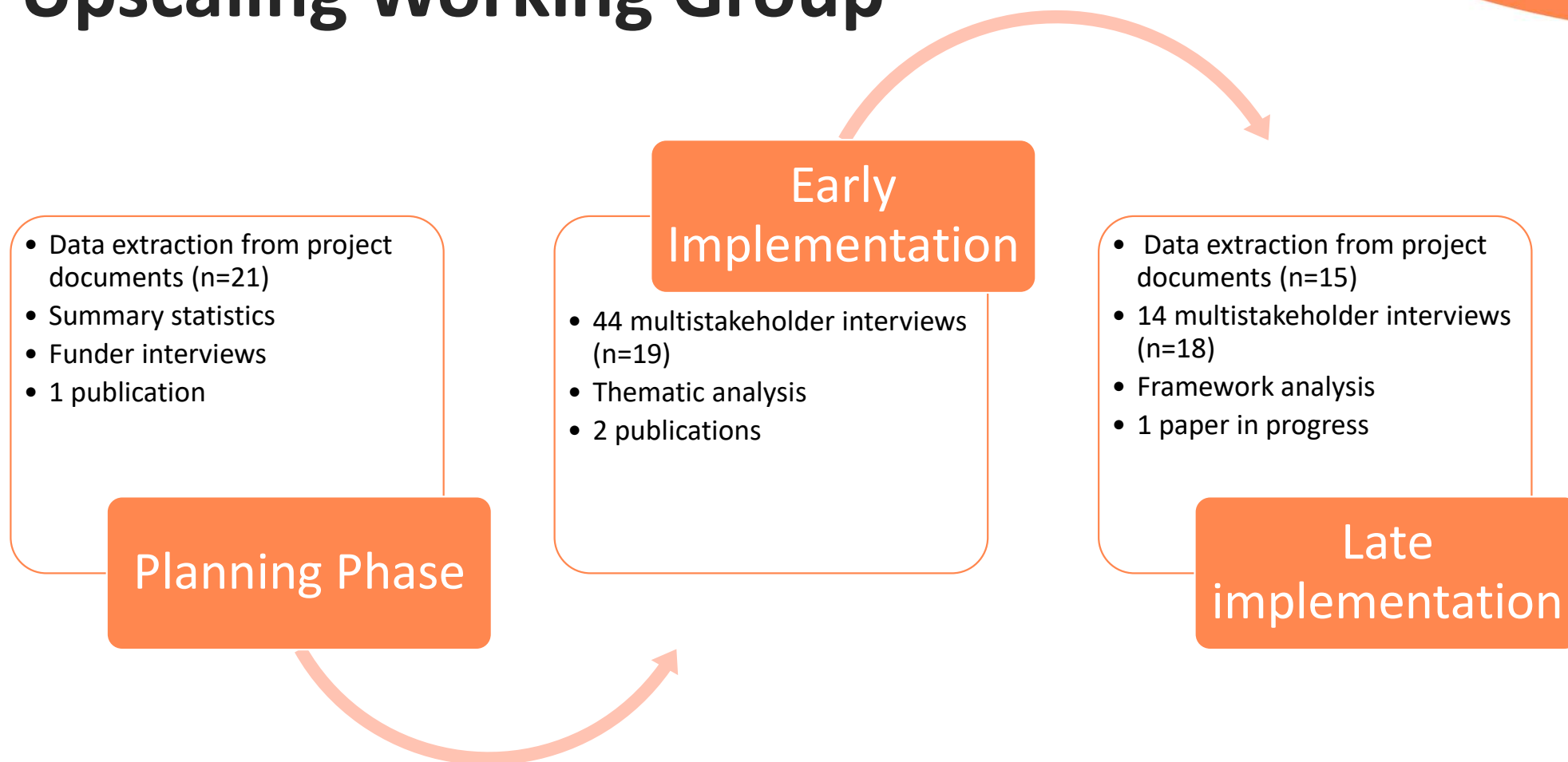
Systems thinking and scaling up



Role of scale up research



Upscaling Working Group



The SUNI-SEA Project

Scaling interventions for diabetes and hypertension across Vietnam, Indonesia, and Myanmar

Key objectives

- Strengthen prevention and control of NCDs.
- Enhance primary healthcare systems.
- Build sustainable, evidence-based models.

Approach

- Systems thinking to address workforce, drug supply, and patient engagement.
- Collaboration with policymakers, healthcare providers, and communities.

Key takeaway: SUNI-SEA showcases the power of systems thinking and stakeholder collaboration to scale up health interventions. Early community engagement and context-specific adaptations are critical for long-term sustainability and equitable impact.



The Bangladesh D:CLARE Project

Scale-up strategy

- **Governance:** Collaborated with the Diabetic Association of Bangladesh and national policymakers
- **Expansion:** Designed to integrate into urban and high-risk regions to enhance scalability
- **Local Adaptation:** The project is designed to be context-specific, adapting to local needs and using community health workers for implementation and follow-up

Lessons learned

- Effective scale-up requires community ownership and policy alignment.
- Flexible implementation is critical in navigating systemic challenges like the COVID-19 pandemic

The D:CLARE project tackled the prevention and management of diabetes in rural Bangladesh using a Participatory Learning and Action approach, engaging local communities in awareness campaigns and strategic health interventions across six unions in Faridpur district.

Key enablers and barriers in scaling up NCD interventions

Enablers

- **Adaptability:** Tailoring interventions to local contexts enhances acceptance and sustainability.
- **Digital health tools:** Strengthen communication, data management, and service continuity, especially in resource-limited settings.
- **Stakeholder engagement:** Early and ongoing involvement ensures local ownership and long-term success.

Barriers

- **Resource limitations:** Financial and infrastructural constraints hinder scalability, especially in LMICs.
- **Cultural resistance:** Misalignment with local norms reduces intervention acceptance.
- **Political instability:** Governance changes disrupt continuity of scaled interventions.

Takeaway: Scalability requires context-specific, adaptable models, sustainable financing, and robust partnerships to overcome systemic barriers.

Examples of frameworks/ theories used in scale-up research planning

Logic
Framework for
project

Scale-up

Implementation

Evaluation
Process and
impact

Stakeholder
mapping and
engagement

Cost-
effectiveness

Scale up frameworks

ExpandNet

Conceptual and
Operational
Framework

IHI Framework

4 step guide to
scaling-up
interventions

AIDED model

Framework for
success

NASSS
Framework

Dynamic
Sustainability
Framework

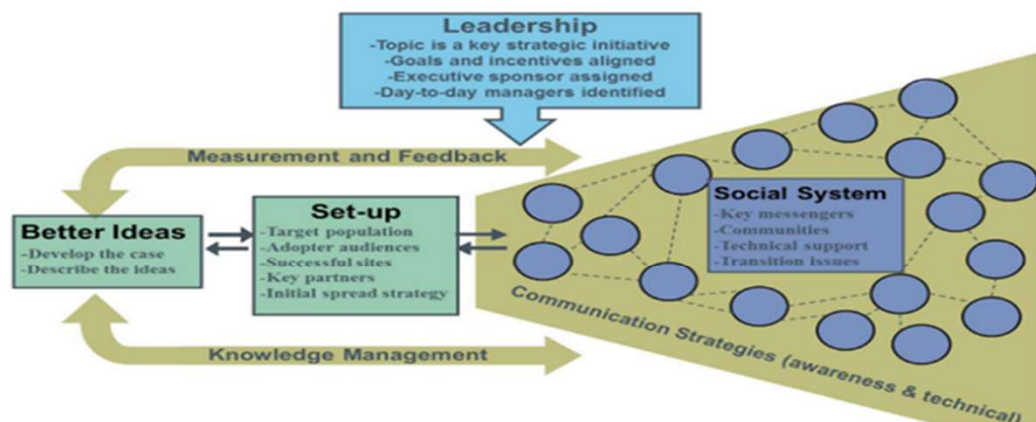
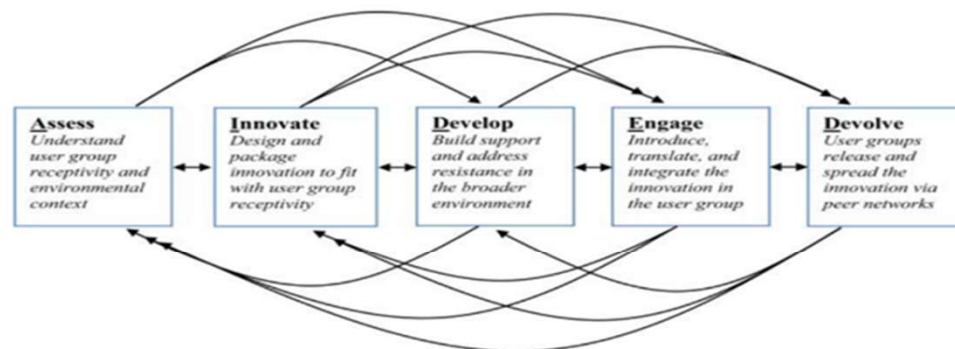


Figure 1. The ExpandNet/WHO framework for scaling up



7. doi:10.1136/bmjopen-2012-000987



Table A defines each of the elements represented inside the oval and provides examples.

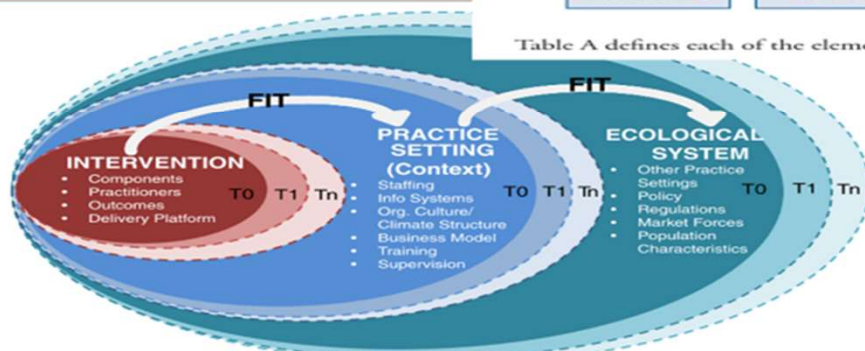
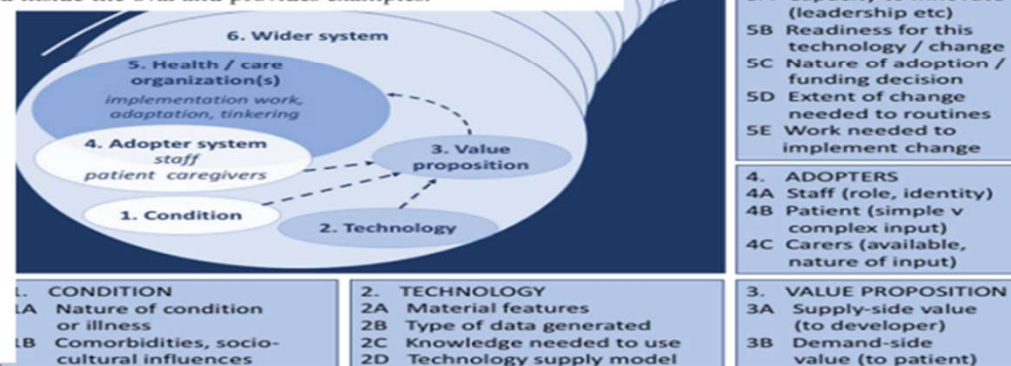


Figure 2 The dynamic sustainability framework. Illustrating the goal of maximizing the fit between interventions, practice settings, and the broader ecological system over time (represented by T_0, T_1, \dots, T_n), each of which has constituent components that may vary.



Key messages

1

Begin planning for scale-up early

2

Identify the goal of scale-up: is it advocacy, is it a process improvement, is it costs/resource mobilization?

3

Multistakeholder engagement: strengthening stakeholder connections for cohesive action

4

Research activities: planning, implementation, evaluation, stakeholder analysis, cost-effectiveness, process.

Key messages

5

Contextual adaptation of intervention but retain core elements; can adapt some details for better fit

6

Choose low-hanging, easy-to-reach groups first; use these as exemplars to showcase

7

Plan for early policy and/or practice changes

8

Leadership and 'champions' are critical for influencing change

Reference list

1. de Savigny, D., & Taghreed, A. (2009). Systems thinking for health system strengthening. World Health Organization. Available at: <https://apps.who.int/iris/handle/10665/44113>
2. Rutter, H., et al. (2017). The need for a complex systems model of evidence for public health. The Lancet, 390(10112), 2602-2604.
3. World Health Organization. (2010). 9 steps for developing a scaling-up strategy. Available at: <https://www.who.int/en/news-room/fact-sheets/detail/health-systems>
4. Ramani-Chander, A., et al. (2024). Challenges and enablers for scaling up interventions targeting non-communicable diseases: a qualitative study applying the Consolidated Framework for Implementation Research to 19 research projects worldwide. BMJ Public Health, 2(e000710).
5. SUNI SEA Scale-up Project. Available at: <https://www.suni-sea.org/en/>
6. Bangladesh D: CLARE Scale-up Project. Available at: <https://www.ucl.ac.uk/global-health/research/z-research/bangladesh-dclare-project-diabetes-community-led-awareness-response-and>

Thank you

- All scale-up study team members and participants
- Upscaling working group members
- GACD Secretariat for their generous support

Anusha Chander

Anusha.Ramani-Chander@monash.edu

спасибо 谢谢
GRACIAS
THANK YOU
ありがとうございました **MERCI**
DANKE धन्यवाद
شُكراً **OBRIGADO**

Zinzi Pardoel

z.e.pardoel@umcg.nl