



Study questions & study designs

Vilma Irazola, MD, MPH, PhD

Director
Department of Research in Chronic Diseases
Institute for Clinical Effectiveness and Health Policy - IECS

Contents

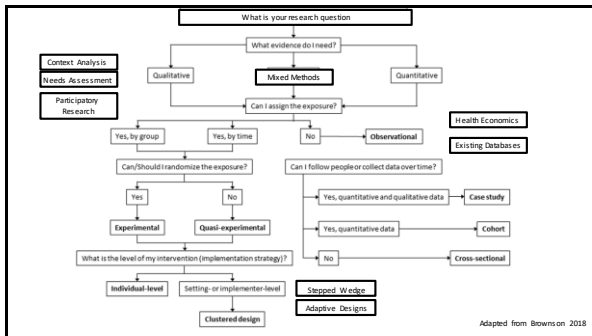
- Study designs used in IS
- Traditional vs Pragmatic trials
- Hybrid designs

2

What is the best study design to use in IR?

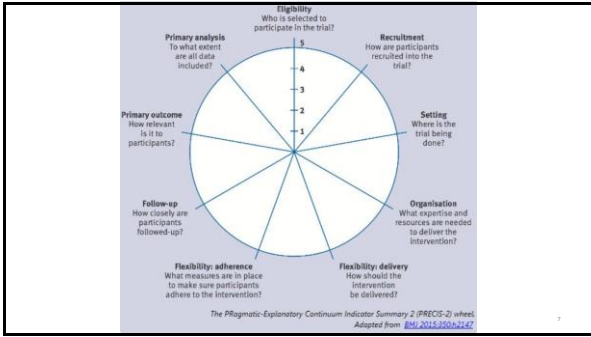
What is the best study design to use in IR?

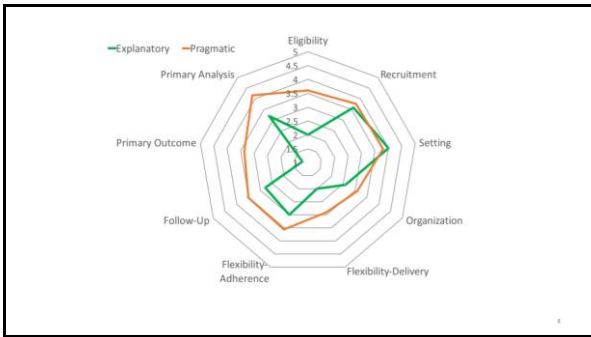
- Research question
- Type of intervention
- Target population(s)
- Feasibility
- Logistics
- Setting
- Costs
- Funding opportunity
- Stakeholders
- Timeline
- Ethics
- Data



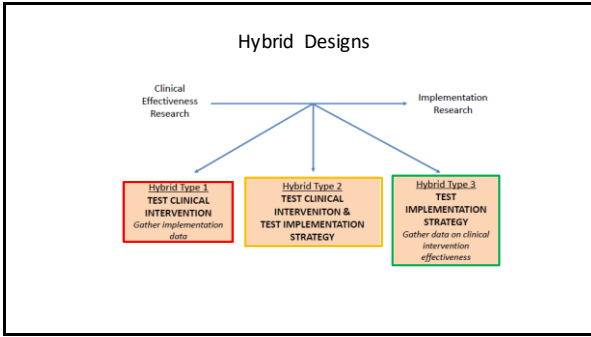
Pragmatic trials vs traditional trials

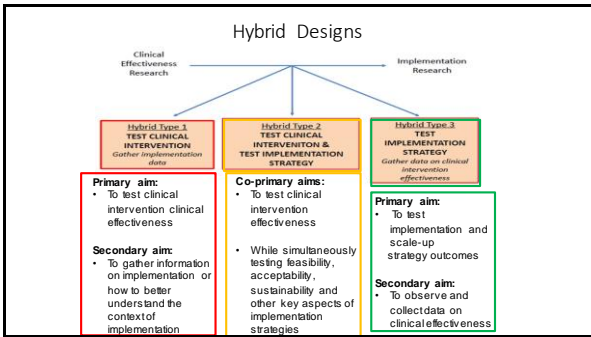
Traditional trials	Pragmatic trials
More exclusion criteria: low external validity	Few exclusion criteria: higher external validity
Limited range of patients, providers and settings	Wide range of patients, providers and settings
Mostly placebo-controlled	Active comparators
Clinical or physiological outcome measures	Clinical and patient-centered outcomes. Process measures
Shorter follow-up with more intensity	Longer follow-up with less intensity
Often double-blinded	Often not blinded
Often individual-randomized	Often cluster-randomized

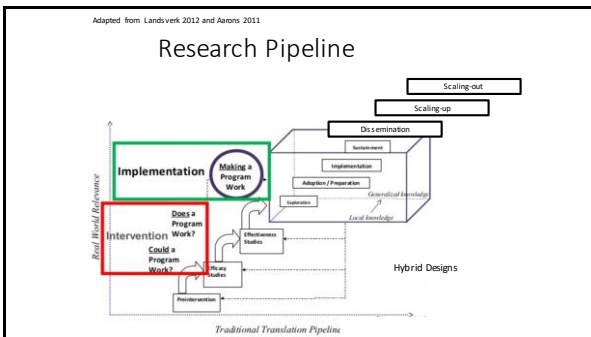




Hybrid Designs







Contents

- Study designs used in IS
- Traditional vs Pragmatic trials
- Hybrid designs

13



Thank you!

virazola@iecs.org.ar

14
